

Gel Filtration Calibration Kit LMW

Gel Filtration Calibration Kit HMW

Two Gel Filtration Calibration Kits are available for the calibration of gel filtration columns. The Low Molecular Weight (LMW) Kit contains five proteins with M_r in the range 6500 to 75 000 and Blue Dextran 2000 (Table 1). The High Molecular Weight (HMW) Kit contains five proteins with M_r in the range 43 000 to 669 000 and Blue Dextran 2000 (Table 2).

The proteins used in the kits are suitable for calibration of gel filtration columns packed with high-resolution gel filtration media such as Superdex™ 75, Superdex 200, Superdex 75 prep grade, Superdex 200 prep grade, Superose™ 12, Superose 6, Sephacryl™ S-100, Sephacryl S-200, and Sephacryl S-300 to allow accurate molecular weight determinations of proteins.

Gel Filtration Calibration Kit LMW and HMW offer:

- Well defined protein standards that show excellent behavior in gel filtration and enable simple, reliable calibration of gel filtration columns
- An optimized range of proteins that suits high-resolution media and prepacked columns with molecular weight ranges from 6500 to 669 000
- Each kit contains five proteins that are lyophilized in individual vials
- Blue Dextran 2000 to determine the void fraction in the column



Fig 1. Gel Filtration Calibration Kit LMW and HMW are two kits for calibration of gel filtration columns.

Table 1. Characteristics of Gel Filtration Calibration Kit LMW

Protein (weight per vial)	Molecular weight (M_r)	Source
Aprotinin (10 mg)	6500	Bovine lung
Ribonuclease A (50 mg)	13 700	Bovine pancreas
Carbonic anhydrase (15 mg)	29 000	Bovine erythrocytes
Ovalbumin (50 mg)	43 000	Hen egg
Conalbumin (50 mg)	75 000	Chicken egg white
Blue dextran 2000 (50 mg)	2 000 000	



Table 2. Characteristics of Gel Filtration Calibration Kit HMW

Protein (weight per vial)	Molecular weight (M_r)	Source
Ovalbumin (50 mg)	43 000	Hen egg
Conalbumin (50 mg)	75 000	Chicken egg white
Aldolase ¹ (50 mg)	158 000	Rabbit muscle
Ferritin ¹ (15 mg)	440 000	Horse spleen
Thyroglobulin (50 mg)	669 000	Bovine thyroid
Blue dextran 2000 (50 mg)	2 000 000	

¹ These proteins are supplied mixed with sucrose or mannitol to maintain stability and aid their solubility.

High-resolution determination of molecular weight

The use of gel filtration chromatography for the determination of the molecular weight and size of proteins is well documented. The technique is based on the established ability of high-resolution gel filtration media, such as Superdex, Superose and Sephacryl to separate molecules according to size. Prepacked columns are available and can be run on chromatography systems such as, ÄKTAdesign™.

Molecular weight determination by gel filtration is carried out by comparing an elution volume parameter, such as the gel phase distribution coefficient (K_{av}) of the protein of interest, with the values obtained for several known calibration standards. In practice, a homologous series of globular proteins have a sigmoid relationship between their elution volume parameters and the logarithm of their molecular weights (M_r). The M_r of an unknown protein can be determined from the calibration curve (plot of K_{av} versus $\log M_r$) once its K_{av} value is calculated from the measured elution volume. For accurate determination of M_r , the calibration standards must have the same relationship between molecular weight and molecular size as the substance of interest. GE Healthcare Calibration Kits provide highly purified, well-characterized, globular protein standards for calibration of gel filtration columns.

Calibration with UNICORN software

Calibration of gel filtration columns on ÄKTAdesign systems can be supported by UNICORN™ software with the optional Analysis Module¹. The Analysis Module automates molecular weight measurement of unknown proteins from calibration curves based on proteins of known M_r . The curves are prepared by plotting retention volume data against the logarithm of the molecular weights of the calibration kit proteins. Thereafter, molecular weights of unknown proteins can be extrapolated from the curve (Fig 2) together with calculated correlation and variance.

¹ The Analysis Module must be ordered separately and installed after the regular UNICORN installation.

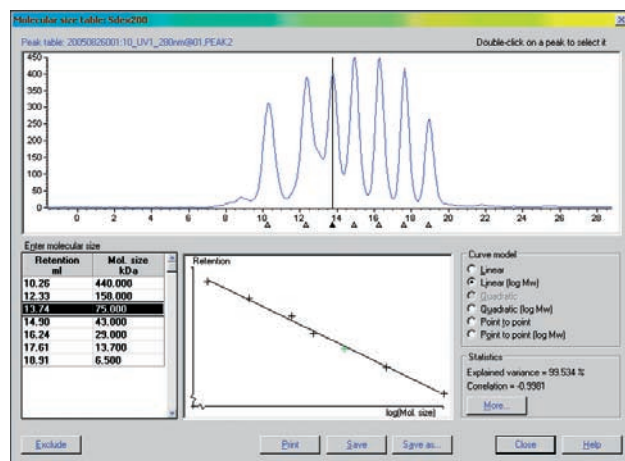


Fig 2. Molecular size table dialog box in the UNICORN software Analysis Module.

Typical results

Typical calibration results from chromatographic runs and calculated calibration curves using prepacked Superdex, Superose and Sephacryl columns are shown in Figures 3 to 11.

The method used for Figures 3 to 11:

Sample:	Proteins from Gel Filtration Calibration Kits LMW and HMW: aprotinin (Apr), RNase A (R), carbonic anhydrase (CA), ovalbumin (O), conalbumin (C), aldolase (Ald), ferritin (F) and thyroglobulin (T)
Sample vol.:	Figures 3 to 6: 100 μ l Figures 7 to 11: 500 μ l
Buffer:	50 mM phosphate buffer, 150 mM NaCl, pH 7.2
Flow rate:	Figures 3, 5, 6, 9, 10 and 11: 0.5 ml/min Figure 4: 0.6 ml/min Figures 7 and 8: 1.0 ml/min
System:	ÄKTExplorer™ 10
Detection:	280 nm

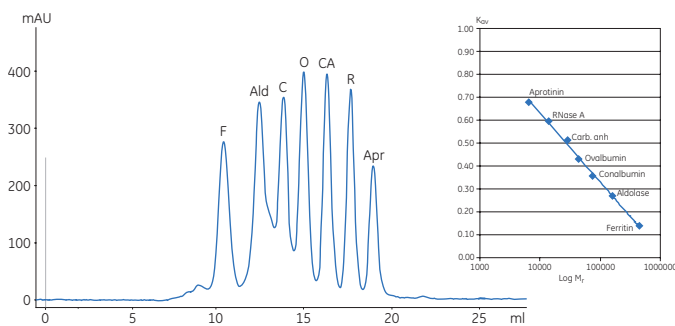


Fig 3. Chromatographic separation and calibration curve for the standard proteins on Tricorn™ Superdex 200 10/300 GL column.

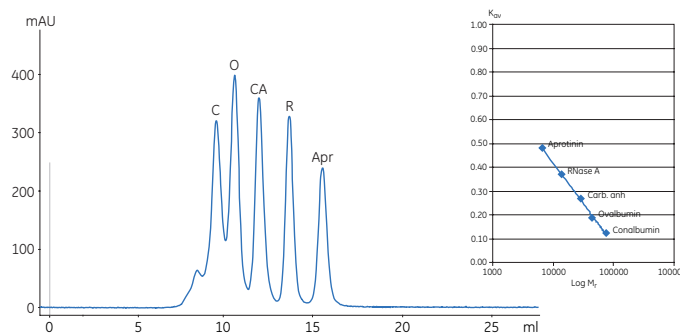


Fig 4. Chromatographic separation and calibration curve for the standard proteins on Tricorn Superdex 75 10/300 GL column.

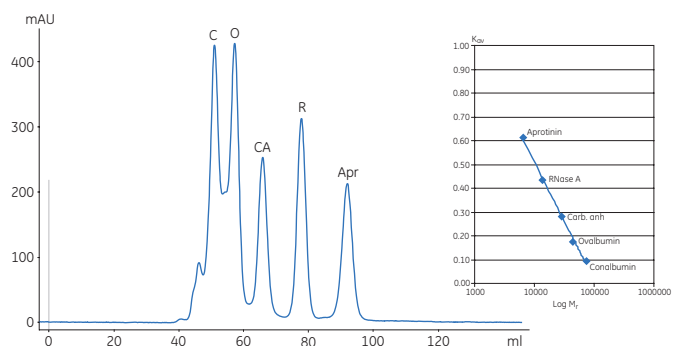


Fig 8. Chromatographic separation and calibration curve for the standard proteins on HiLoad 16/60 Superdex 75 pg column.

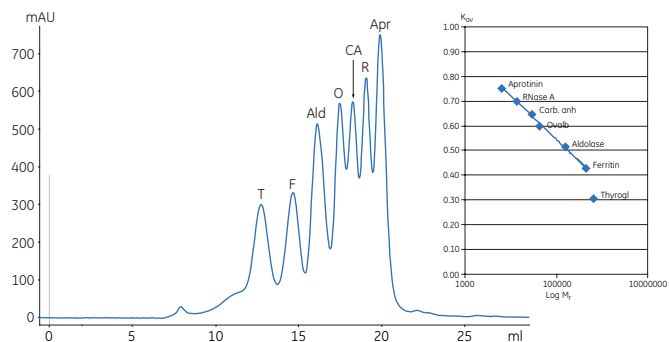


Fig 5. Chromatographic separation and calibration curve for the standard proteins on Tricorn Superose 6 10/300 GL column.

Note: Thyroglobulin may be excluded from the calculation of K_{DV} due to non-linear behavior of thyroglobulin on this column. Thyroglobulin may however, be included in a plot of $\sqrt{-\log(K_{DV})}$ vs. Stokes Radius (R_{S_1}).

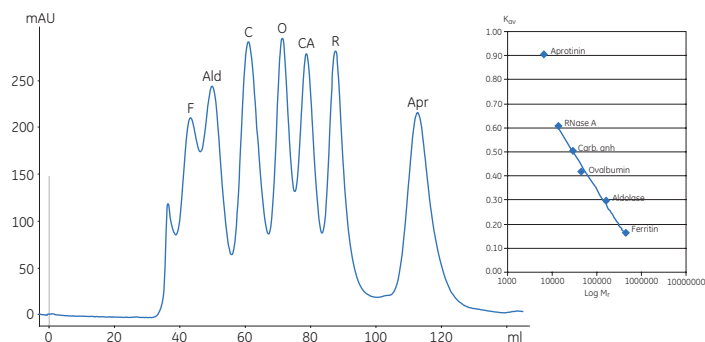


Fig 9. Chromatographic separation and calibration curve for the standard proteins on HiPrep™ 16/60 Sephacryl S-300 HR column.

Note: Aprotinin may be excluded from the calculation of K_{DV} due to non-linear behavior of aprotinin on this column.

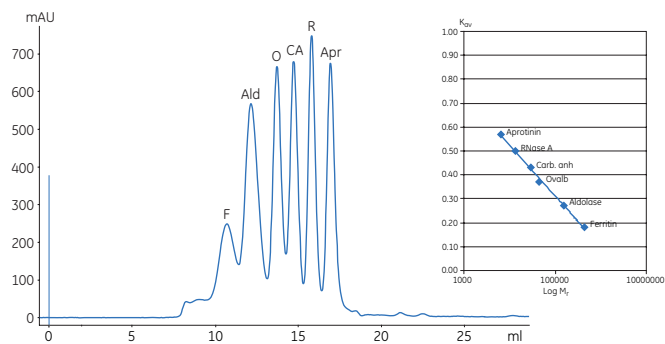


Fig 6. Chromatographic separation and calibration curve for the standard proteins on Tricorn Superose 12 10/300 GL column.

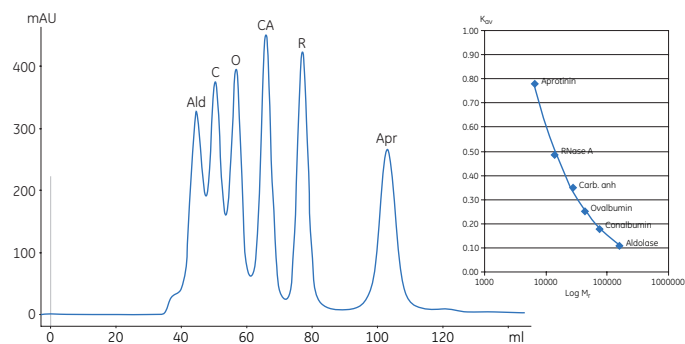


Fig 10. Chromatographic separation and calibration curve for the standard proteins on HiPrep 16/60 Sephacryl S-200 HR column.

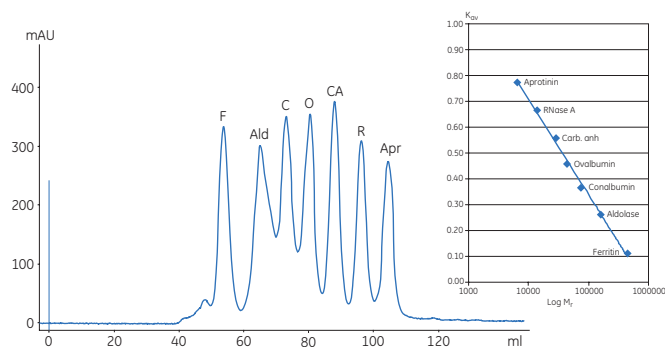


Fig 7. Chromatographic separation and calibration curve for the standard proteins on HiLoad™ 16/60 Superdex 200 pg column.

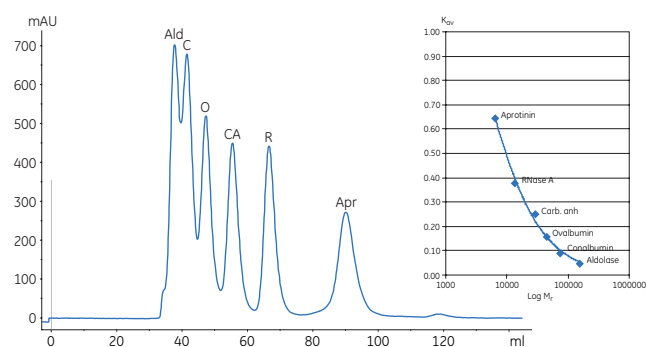


Fig 11. Chromatographic separation and calibration curve for the standard proteins on HiPrep 16/60 Sephacryl S-100 HR column.

Ordering information

Gel Filtration Calibration Kits	Quantity	Code no.	Related literature	Code no.
Low Molecular Weight	1	28-4038-41	Selection guide: Gel Filtration Columns and Media	18-1124-19
High Molecular Weight	1	28-4038-42	Handbook: Gel Filtration - Principles & Methods	18-1022-18

Related products

Quantity	Code no.
Superdex 75 10/300 GL	1 17-5174-01
Superdex 75 PC 3.2/30	1 17-0771-01
Superdex 200 10/300 GL	1 17-5175-01
Superdex 200 PC 3.2/30	1 17-1089-01
HiLoad 16/60 Superdex 75 pg	1 17-1068-01
HiLoad 26/60 Superdex 75 pg	1 17-1070-01
HiLoad 16/60 Superdex 200 pg	1 17-1069-01
HiLoad 26/60 Superdex 200 pg	1 17-1071-01
Superose 12 10/300 GL	1 17-5173-01
Superose 12 PC 3.2/30	1 17-0674-01
Superose 6 10/300 GL	1 17-5172-01
Superose 6 PC 3.2/30	1 17-0673-01
HiPrep 16/60 Sephacryl S-100 HR	1 17-1165-01
HiPrep 26/60 Sephacryl S-100 HR	1 17-1194-01
HiPrep 16/60 Sephacryl S-200 HR	1 17-1166-01
HiPrep 26/60 Sephacryl S-200 HR	1 17-1195-01
HiPrep 16/60 Sephacryl S-300 HR	1 17-1167-01
HiPrep 26/60 Sephacryl S-300 HR	1 17-1196-01
UNICORN – Analysis Module	1 11-0003-60

www.gehealthcare.com/protein-purification
www.gehealthcare.com

GE Healthcare Bio-Sciences AB
 Björkgatan 30
 751 84 Uppsala
 Sweden

Superdex, Superose, Sephacryl, ÄKTAdesign, ÄKTAexplorer, HiLoad, HiPrep, Tricorn, UNICORN, GE, imagination at work, and GE monogram are trademarks of General Electric Company.

All goods and services are sold subject to the terms and conditions of sale of the company within GE Healthcare which supplies them. GE Healthcare reserves the right, subject to any regulatory and contractual approval, if required, to make changes in specifications and features shown herein, or discontinue the product described at any time without notice or obligation. Contact your local GE Healthcare representative for the most current information.

GE Healthcare Bio-Sciences AB, a General Electric Company.

© 2006 General Electric Company – All rights reserved.

GE Healthcare Bio-Sciences AB
 Björkgatan 30, 751 84 Uppsala, Sweden

GE Healthcare Europe GmbH
 Munzinger Strasse 5, D-79111 Freiburg, Germany

GE Healthcare UK Ltd
 Amersham Place, Little Chalfont, Buckinghamshire, HP7 9NA, UK

GE Healthcare Bio-Sciences Corp
 800 Centennial Avenue, P.O. Box 1327, Piscataway, NJ 08855-1327, USA

GE Healthcare Bio-Sciences KK
 Sanken Bldg. 3-25-1, Hyakunincho, Shinjuku-ku, Tokyo 169-0073, Japan

Asia Pacific T +85 65 62751830 F +85 65 62751829 • Australasia T +61 2 8820 8299 F +61 2 8820 8200 • Austria T 01 /57606 1613 F 01 /57606 1614 • Belgium T 0800 73 890 F 02 416 8206 • Canada T 1 800 463 5800 F 1 800 567 1008 • Central & East Europe T +43 1 972 720 F +43 1 972 722 750 • Denmark T +45 70 25 24 50 F +45 45 16 2424 • Eire T 1 800 709992 F +44 1494 542010 • Finland & Baltics T +358 9 512 3940 F +358 9 512 39439 • France T 01 69 35 67 00 F 01 69 41 98 77
 Germany T 0800 9080 711 F 0800 9080 712 • Greater China T +852 2100 6300 F +852 2100 6338 • Italy T 02 26001 320 F 02 26001 399 • Japan T 81 3 5331 9336 F 81 3 5331 9370 • Korea T 82 2 6201 3700 F 82 2 6201 3803 • Latin America T +55 11 3933 7300 F +55 11 3933 7304 • Middle East & Africa T +30 210 96 00 687 F +30 210 96 00 693 • Netherlands T 0800-82 82 82 1 F 0800-82 82 82 4 • Norway T +47 815 65 777 F +47 815 65 666 • Portugal T 21 417 7035 F 21 417 3184 • Russia, CIS & NIS T +7 495 956 5177 F +7 495 956 5176 • Spain T 902 11 72 65 F 935 94 49 65 • Sweden T 018 612 1900 F 018 612 1910 • Switzerland T 0848 8028 10 F 0848 8028 11 • UK T 0800 515 313 F 0800 616 927 • USA T +1 800 526 3593 F +1 877 295 8102

